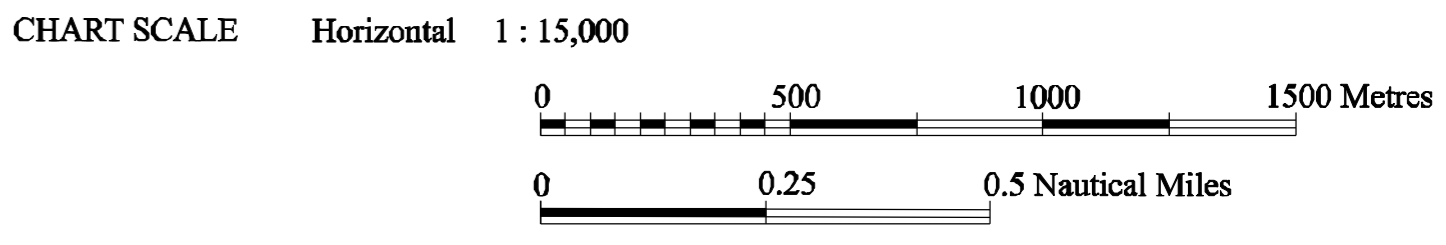


- NOTES**
1. Bathymetric data acquired using LADS Mk II Lidar
 2. Sheet name assigned by Geological Survey of Ireland (GSI)
 3. Wrecks and Navigation Beacons may be present in the data but have not been indicated by symbols on this sheet
 4. Topographic features remain in the dataset
 5. Sun illumination from the North East

GEODETIC CONTROL
Spheroid : WGS-84
Projection : Universal Transverse Mercator, Zone 29 N, CM 9° W

HORIZONTAL CONTROL
Real-time : Fugro OmniStar WADGPS
Post-processed : PNAV Post-processed Dual Frequency KGPS

VERTICAL CONTROL
Bathymetric data reduced to Malin Head Ordnance Datum using observed tides at Rinville and Parkmore



GEOLOGICAL SURVEY OF IRELAND
SUIRBHÉIREACHT GHEOLAÍOCHTA ÉIREANN
DEPARTMENT OF COMMUNICATIONS,
MARINE & NATURAL RESOURCES
ROINN CUMARSÁIDE, MARA AGUS ACMHAINNÍ NÁDÚRTHA

IRISH NATIONAL SEABED SURVEY
ZONE 1 : F.1.2.3.4.1.4
SUN ILLUMINATED IMAGE



THIS MAP IS PURELY REPRESENTATIONAL AND IS DESIGNED FOR GENERAL INFORMATION AND STRATEGIC PLANNING ONLY. BATHYMETRY IS BASED ON DATA AVAILABLE TO THE GSI AT THE TIME OF COMPILATION. THE ACCURACY OF THE DATA USED, OR INTERPOLATIONS MADE, IS NEITHER STATED OR IMPLIED. EVALUATION OF SPECIFIC SITES WILL NORMALLY REQUIRE FURTHER AND MORE DETAILED ASSESSMENTS AND WILL FREQUENTLY REQUIRE SITE INVESTIGATIONS.

| REV NO. | REVISION | SIGNED | DATE |
|---------|---------------|--------|----------|
| 1 | Approved data | KW | 28/02/07 |

DRAWN BY: Kirsty Watson
CHECKED BY: Chris Johnson
APPROVED BY: Nigel Townsend
DATE: 28th February 2007

SURVEY DATE: September - October 2006
VESSEL: LADS Mk II Airborne Lidar Bathymetry

© COPYRIGHT, GEOLOGICAL SURVEY OF IRELAND, 2007
DRAWING NO.: LADS_F123414_S11